

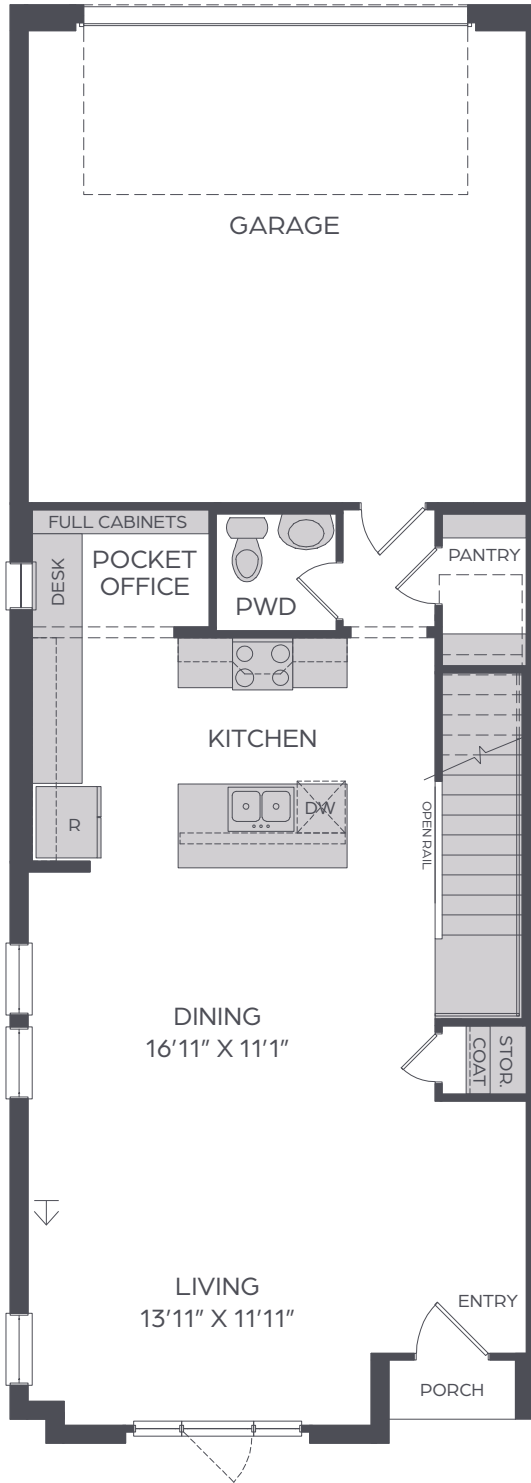
# VIRIDIAN VILLAGE

## SALLIE

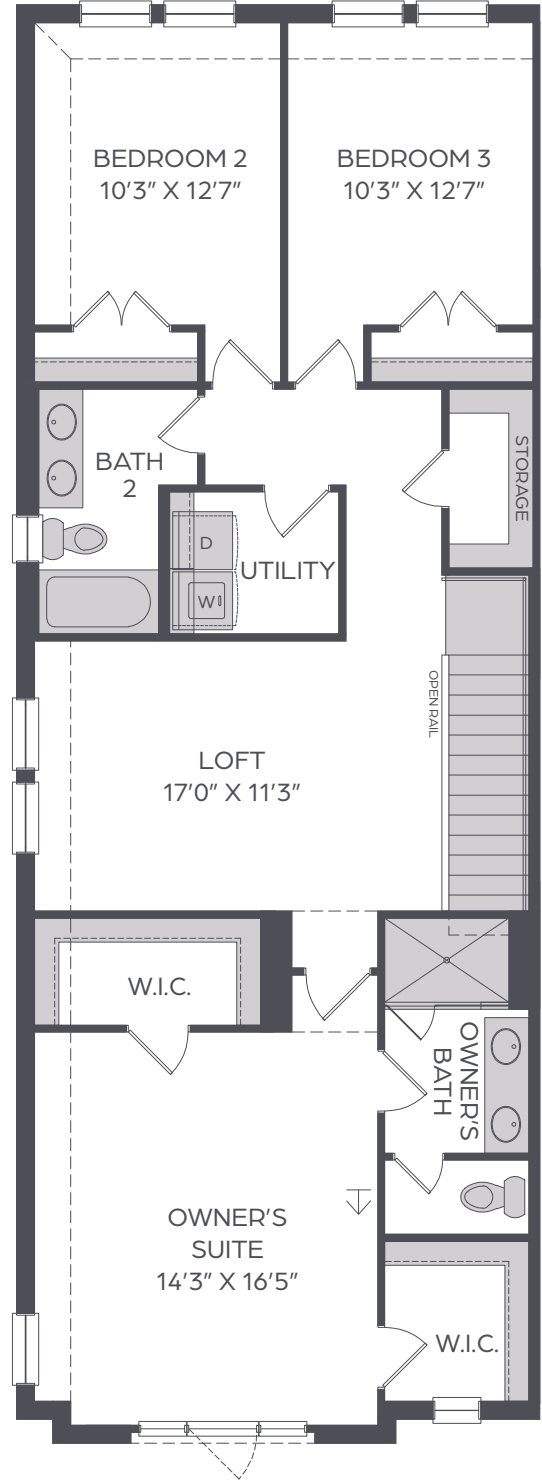
2,083 SQ FT | 3 BED | 2.5 BATH



↓ CABLE



MAIN FLOOR



UPPER FLOOR



All dimensions and square footage are approximate at Viridian and subject to change. Illustrations are artist's conception and not reproductions of original plans. The Cadence Homes policy of continual attention to design and construction requires that specification, equipment and dimensions be subject to change without notice. Certain options can change room count. Please consult Community Sales Manager for details. 1.20.2021